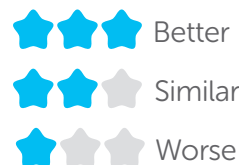


OVERVIEW OF CANCER IN CWM TAF UNIVERSITY HEALTH BOARD

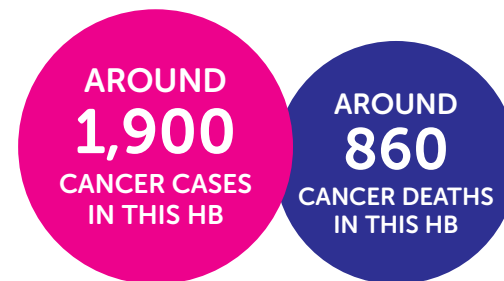
Cancer Research UK is committed to accelerating progress so that 3 in 4 people survive cancer by 2034.

This data refers to:
Health Board (HB): Cwm Taf University Health Board

Compared to average:



'Better' and 'Worse' means that the difference from the average is statistically significant, 'Similar' is when it is not.



Sept 2018

PREVENTION



Smoking



20.9% of adults currently smoke cigarettes in this HB. This is similar to the Wales average (18.7%).



Obesity



28.9% of 4-5 year-olds are overweight or obese in this HB. This is similar to the Wales average (27.1%).



64.5% of adults are overweight or obese in this HB. This is higher than the Wales average (59.5%).

ACTION: The new Obesity Strategy must include measures to restrict price promotions on unhealthy foods.

EARLY DIAGNOSIS



Stage at diagnosis

Early diagnosis (cancer diagnosed at stages 1 and 2) gives patients more effective treatment options, improving their chance of survival.

Only 45.2% of bowel cancers with a known stage are diagnosed early in this HB.



Bowel screening



52.6% of people aged 60-74 take part in bowel cancer screening in this HB. This is lower than the Wales average (53.4%).

ACTION: Health Education and Improvement Wales must address gaps in the diagnostic workforce, so demand for cancer tests can be met.

TREATMENT



Referral to treatment

TARGET NOT MET

86.6% of patients in this HB receive their first definitive cancer treatment within 62 days of an urgent GP referral. This is below the national target (95%). The Wales average, 87.2%, is also below the national target.



31-day waiting times

TARGET MET

98.7% of patients in this HB receive their first cancer treatment within 31 days of a decision to treat. This is above the national target (98%). The Wales average, 97.3%, is below the national target.

SURVIVAL



Five year survival

57.1% of people diagnosed with cancer in Wales survive their disease for five years or more.



Survival by stage for bowel cancer

When diagnosed at its earliest stage (stage 1), 97.6% of people in Wales will survive their disease for one year or more, compared with 38.8% when diagnosed at the latest stage (stage 4).

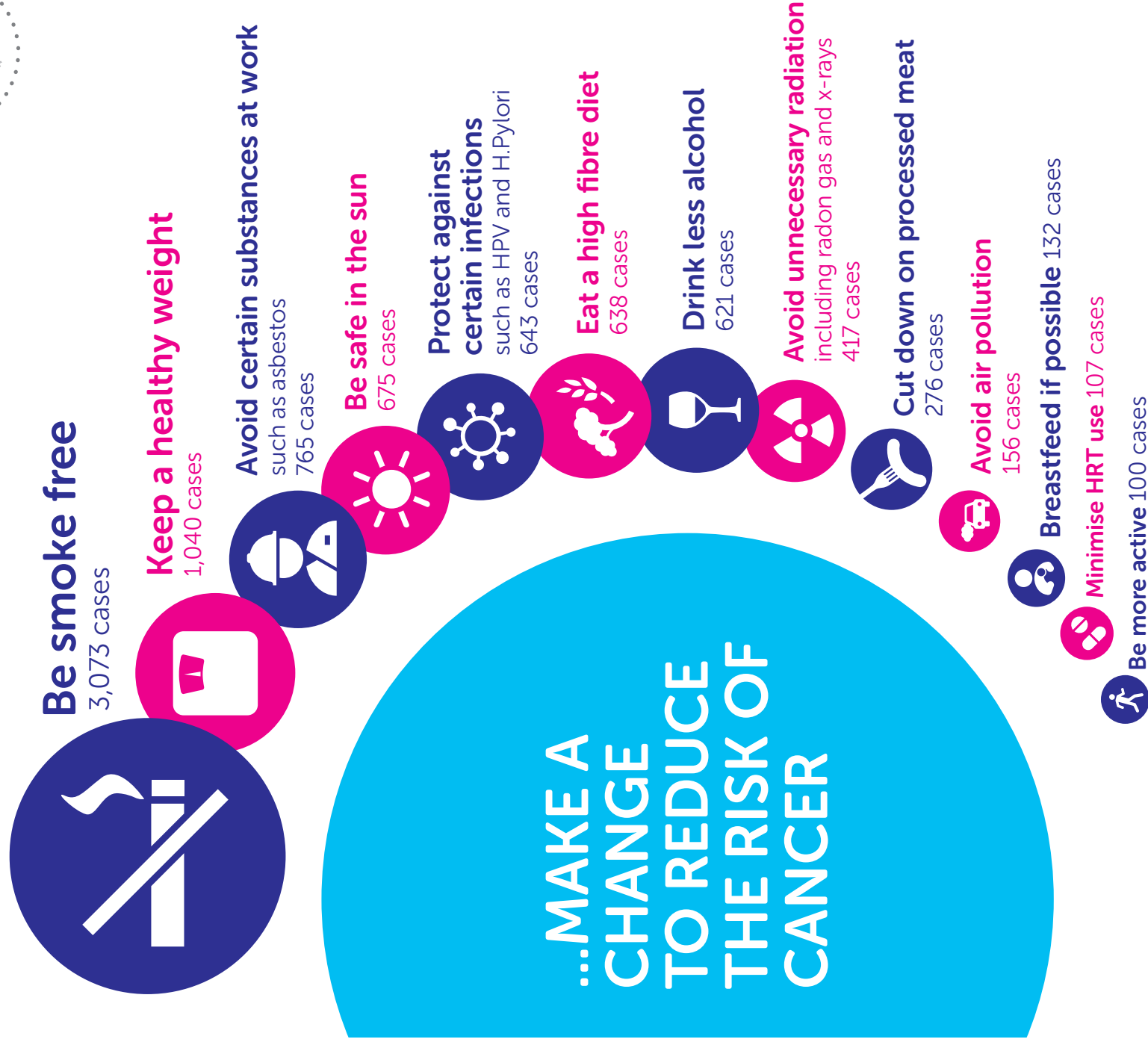
ACTION: The new FIT for bowel screening test must be introduced on time, with a plan to improve the programme even further.

Email andy.glyde@cancer.org.uk for sources and more information

TOGETHER WE WILL BEAT CANCER
cruk.org/wales



4 IN 10 CANCER CASES IN WALES CAN BE PREVENTED...



Circle size here is not relative to other infographics based on Brown et al 2018.

Source: Brown et al, British Journal of Cancer, 2018

TOGETHER WE WILL BEAT CANCER
cruk.org/prevention



Uned Gwybodaeth a Gwyllwriaeth Cancer Cymru
Welsh Cancer Intelligence and Surveillance Unit



CANCER RESEARCH UK