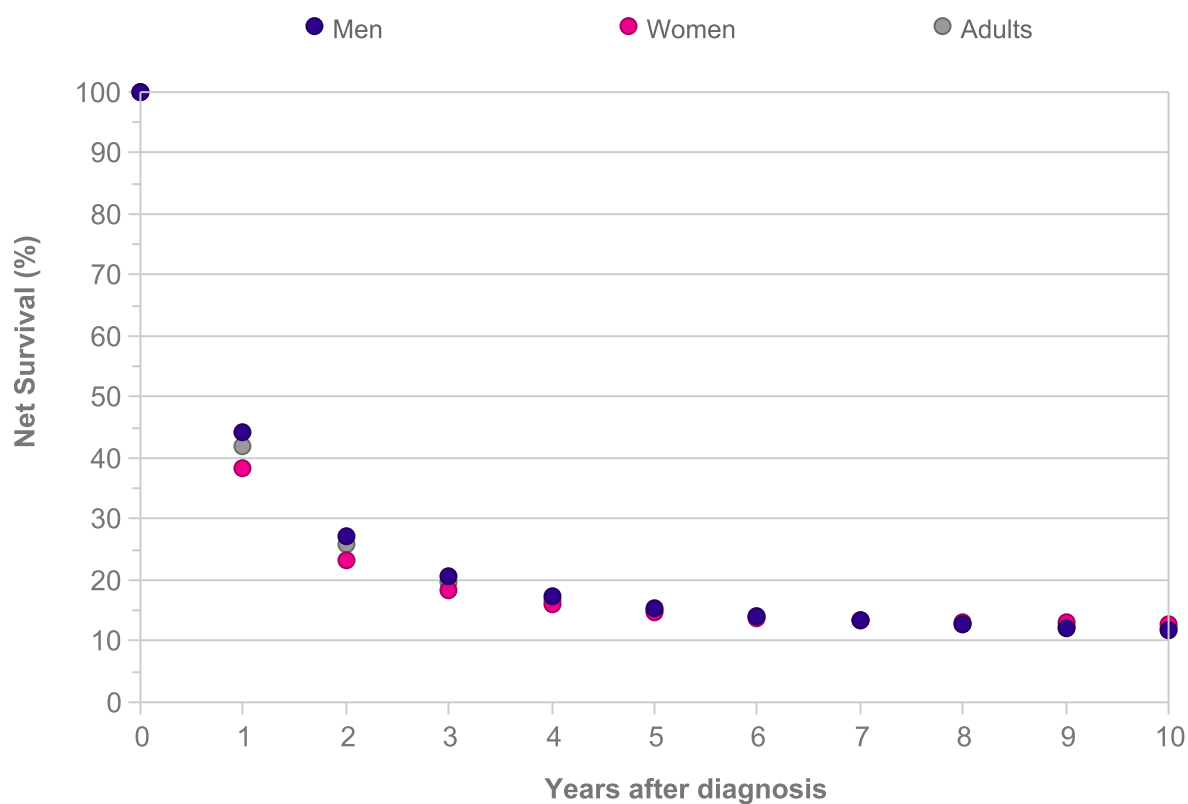


## Oesophageal Cancer (C15): 2010-2011

### Net Survival up to Ten Years after Diagnosis, Adults (Aged 15-99), England and Wales

Years after diagnosis	Net Survival (%)		
	Men	Women	Adults
0	100.0	100.0	100.0
1	44.2	38.4	41.9
2	27.3	23.4	25.8
3	20.7	18.3	19.8
4	17.4	15.9	16.8
5	15.5	14.6	15.1
6	14.2	13.9	14.1
7	13.3	13.5	13.4
8	12.7	13.2	12.9
9	12.2	13.0	12.5
10	11.8	12.9	12.3



Please include the citation provided in our Frequently Asked Questions when reproducing this chart: <http://info.cancerresearchuk.org/cancerstats/faqs/#How>

Prepared by Cancer Research UK

**Original data sources:**

Survival estimates were provided on request by the Cancer Research UK Cancer Survival Group at the London School of Hygiene and Tropical Medicine. <http://www.lshtm.ac.uk/eph/ncde/cancersurvival/>

