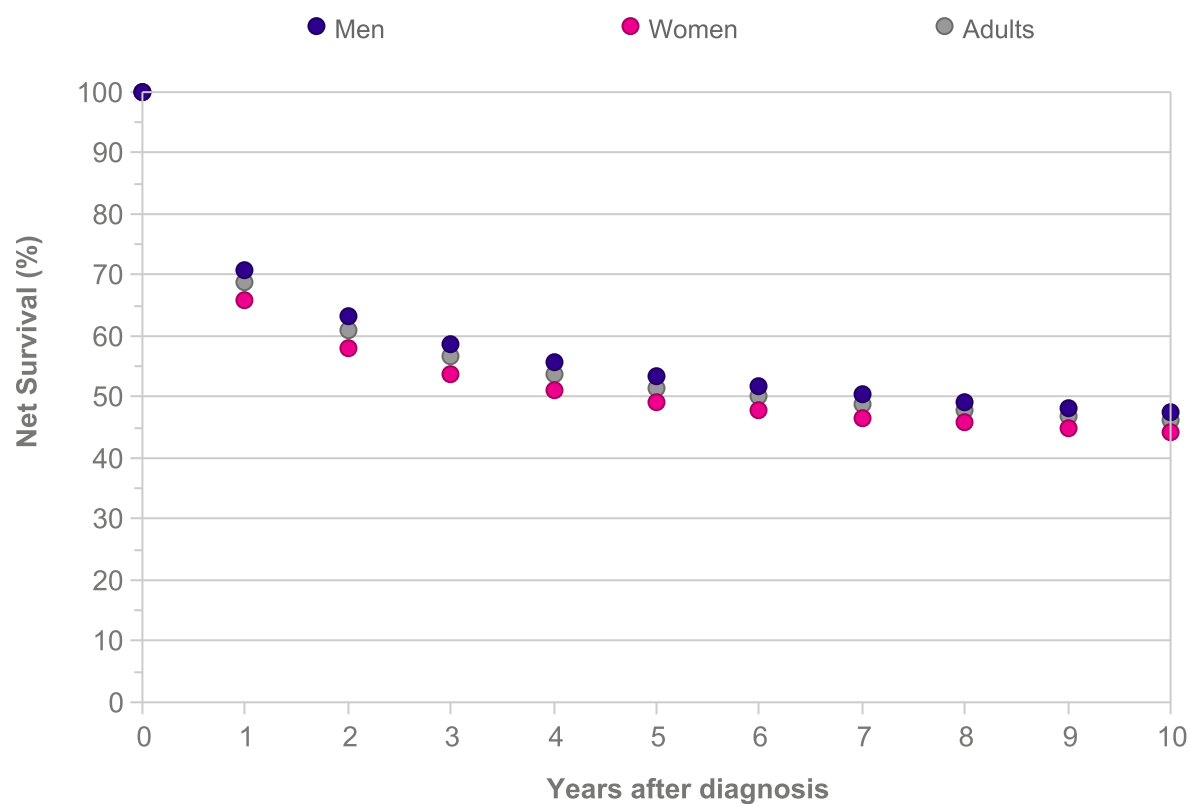


Leukaemia (C91-C95): 2010-2011

Net Survival up to Ten Years after Diagnosis, Adults (Aged 15-99), England and Wales

Years after diagnosis	Net Survival (%)		
	Men	Women	Adults
0	100.0	100.0	100.0
1	70.9	66.0	68.8
2	63.2	58.1	61.0
3	58.7	53.9	56.6
4	55.6	51.1	53.7
5	53.5	49.2	51.6
6	51.8	47.8	50.0
7	50.4	46.7	48.8
8	49.3	45.8	47.8
9	48.4	45.0	46.9
10	47.5	44.4	46.2



Please include the citation provided in our Frequently Asked Questions when reproducing this chart: <http://info.cancerresearchuk.org/cancerstats/faqs/#How>

Prepared by Cancer Research UK

Original data sources:

Survival estimates were provided on request by the Cancer Research UK Cancer Survival Group at the London School of Hygiene and Tropical Medicine. <http://www.lshtm.ac.uk/eph/ncde/cancersurvival/>

