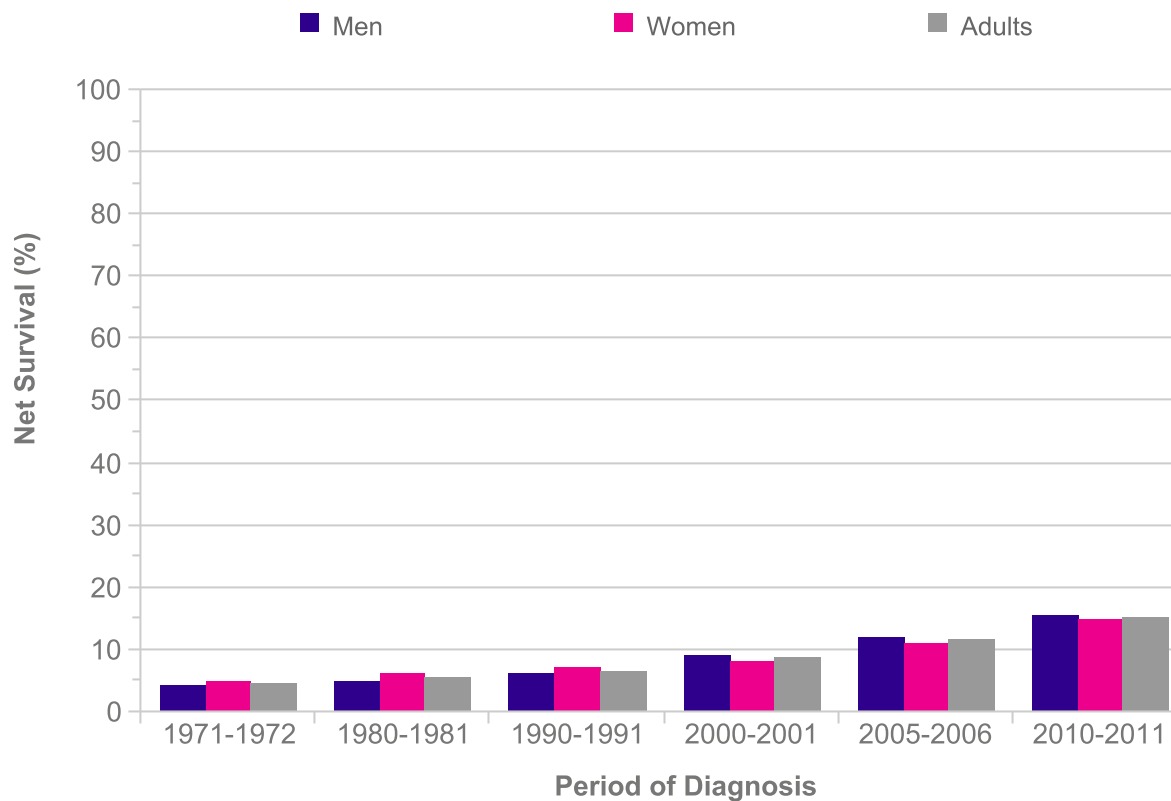


**Oesophageal Cancer (C15): 1971-2011**  
**Age-Standardised Five-Year Net Survival, England and Wales**

Period of Diagnosis	Net Survival (%)		
	Men	Women	Adults
1971-1972	4.1	4.9	4.4
1980-1981	4.8	6.2	5.4
1990-1991	6.2	7.1	6.5
2000-2001	9.1	8.2	8.8
2005-2006	11.9	10.8	11.5
2010-2011	15.5	14.6	15.1



Please include the citation provided in our Frequently Asked Questions when reproducing this chart: <http://info.cancerresearchuk.org/cancerstats/faqs/#How>  
**Prepared by Cancer Research UK**  
**Original data sources:**  
 Survival estimates were provided on request by the Cancer Research UK Cancer Survival Group at the London School of Hygiene and Tropical Medicine.  
<http://www.lshtm.ac.uk/eph/ncde/cancersurvival/>

