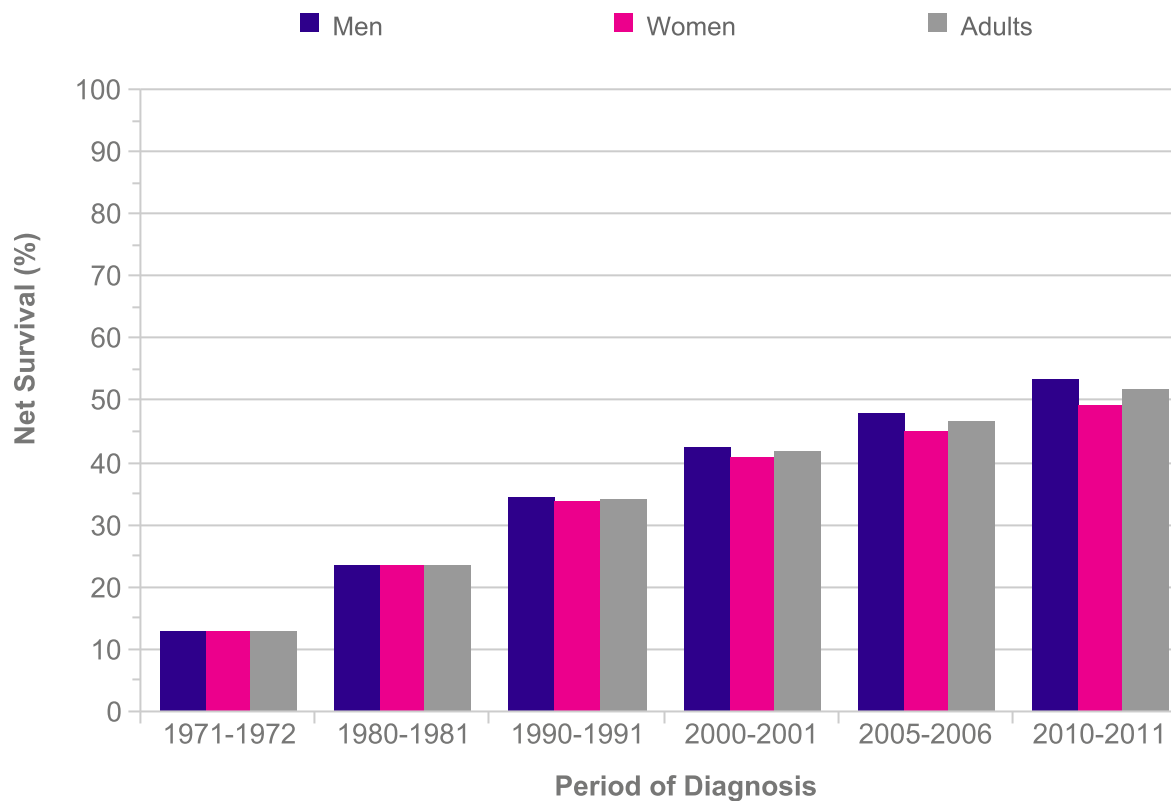


Leukaemia (C91-C95): 1971-2011

Age-Standardised Five-Year Net Survival, England and Wales

Period of Diagnosis	Net Survival (%)		
	Men	Women	Adults
1971-1972	12.9	13.0	12.9
1980-1981	23.5	23.5	23.5
1990-1991	34.3	33.7	34.0
2000-2001	42.5	40.7	41.7
2005-2006	47.8	44.9	46.5
2010-2011	53.5	49.2	51.6



Please include the citation provided in our Frequently Asked Questions when reproducing this chart: <http://info.cancerresearchuk.org/cancerstats/faqs/#How>

Prepared by Cancer Research UK

Original data sources:

Survival estimates were provided on request by the Cancer Research UK Cancer Survival Group at the London School of Hygiene and Tropical Medicine.
<http://www.lshtm.ac.uk/eph/ncde/cancersurvival/>
<http://www.lshtm.ac.uk/eph/ncde/cancersurvival/>

