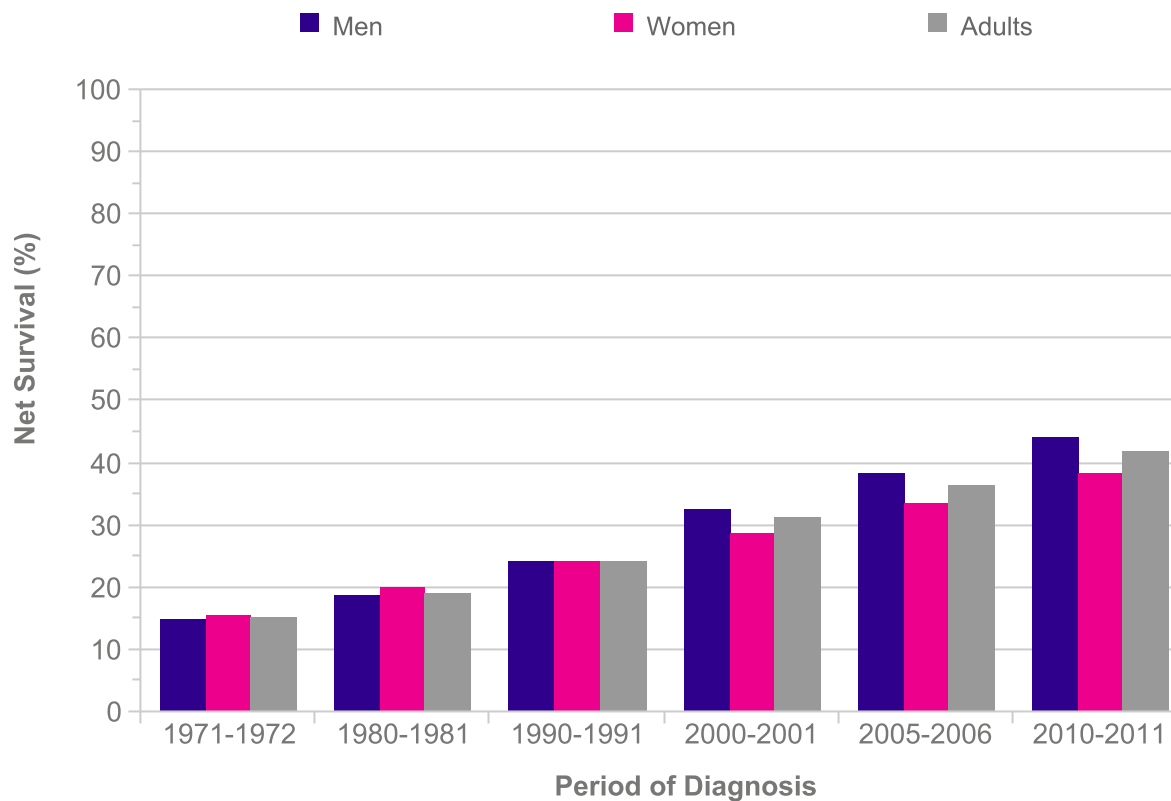


**Oesophageal Cancer (C15): 1971-2011**  
**Age-Standardised One-Year Net Survival, England and Wales**

Period of Diagnosis	Net survival (%)		
	Men	Women	Adults
1971-1972	14.9	15.6	15.2
1980-1981	18.6	19.9	19.1
1990-1991	24.0	24.2	24.1
2000-2001	32.6	28.7	31.1
2005-2006	38.2	33.3	36.3
2010-2011	44.2	38.4	41.9



Please include the citation provided in our Frequently Asked Questions when reproducing this chart: <http://info.cancerresearchuk.org/cancerstats/faqs/#How>  
**Prepared by Cancer Research UK**  
**Original data sources:**  
 Survival estimates were provided on request by the Cancer Research UK Cancer Survival Group at the London School of Hygiene and Tropical Medicine.  
<http://www.lshtm.ac.uk/eph/ncde/cancersurvival/>

