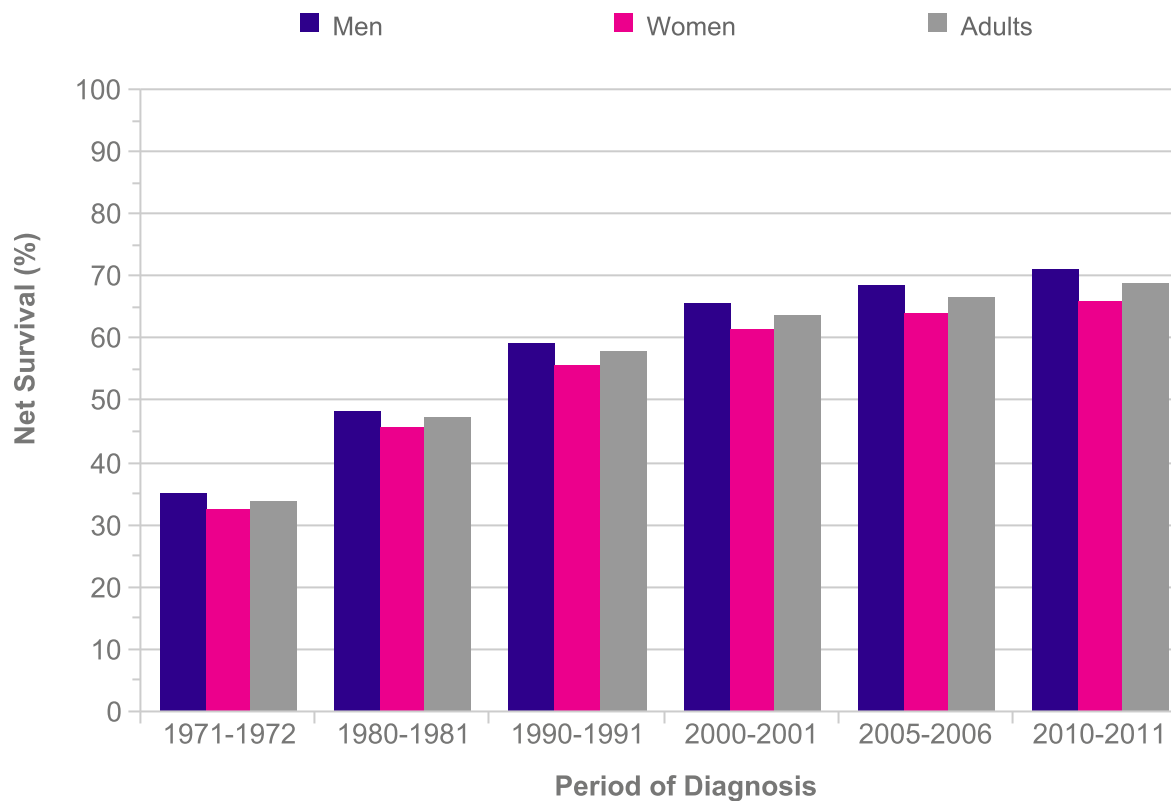


Leukaemia (C91-C95): 1971-2011
Age-Standardised One-Year Net Survival, England and Wales

Period of Diagnosis	Net survival (%)		
	Men	Women	Adults
1971-1972	35.0	32.5	33.9
1980-1981	48.4	45.5	47.1
1990-1991	59.2	55.8	57.7
2000-2001	65.6	61.5	63.8
2005-2006	68.4	63.9	66.4
2010-2011	70.9	66.0	68.8



Please include the citation provided in our Frequently Asked Questions when reproducing this chart: <http://info.cancerresearchuk.org/cancerstats/faqs/#How>
Prepared by Cancer Research UK
Original data sources:
 Survival estimates were provided on request by the Cancer Research UK Cancer Survival Group at the London School of Hygiene and Tropical Medicine.
<http://www.lshtm.ac.uk/eph/ncde/cancersurvival/>

