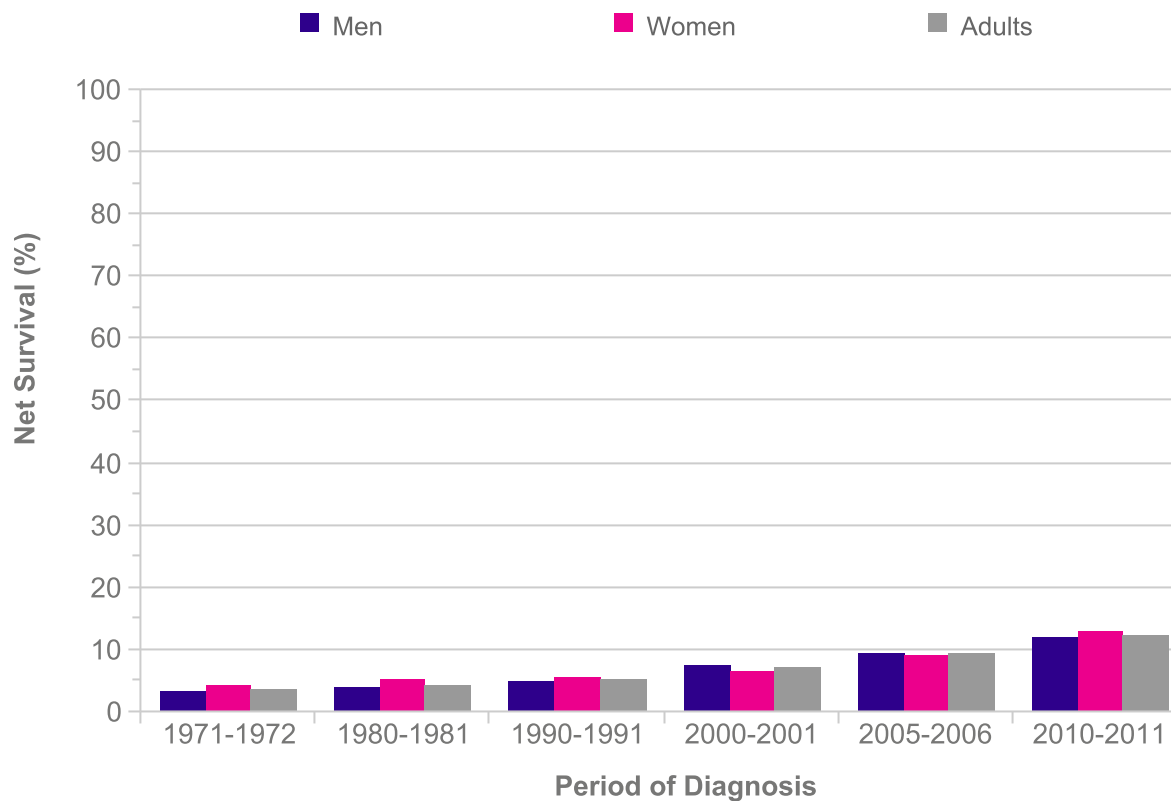


**Oesophageal Cancer (C15): 1971-2011**  
**Age-Standardised Ten-Year Net Survival, England and Wales**

Period of Diagnosis	Net Survival (%)		
	Men	Women	Adults
1971-1972	3.3	4.0	3.6
1980-1981	3.8	5.1	4.3
1990-1991	4.9	5.6	5.2
2000-2001	7.3	6.5	7.0
2005-2006	9.4	9.0	9.2
2010-2011	11.8	12.9	12.3



Please include the citation provided in our Frequently Asked Questions when reproducing this chart: <http://info.cancerresearchuk.org/cancerstats/faqs/#How>  
**Prepared by Cancer Research UK**  
**Original data sources:**  
 Survival estimates were provided on request by the Cancer Research UK Cancer Survival Group at the London School of Hygiene and Tropical Medicine.  
<http://www.lshtm.ac.uk/eph/ncde/cancersurvival/>

