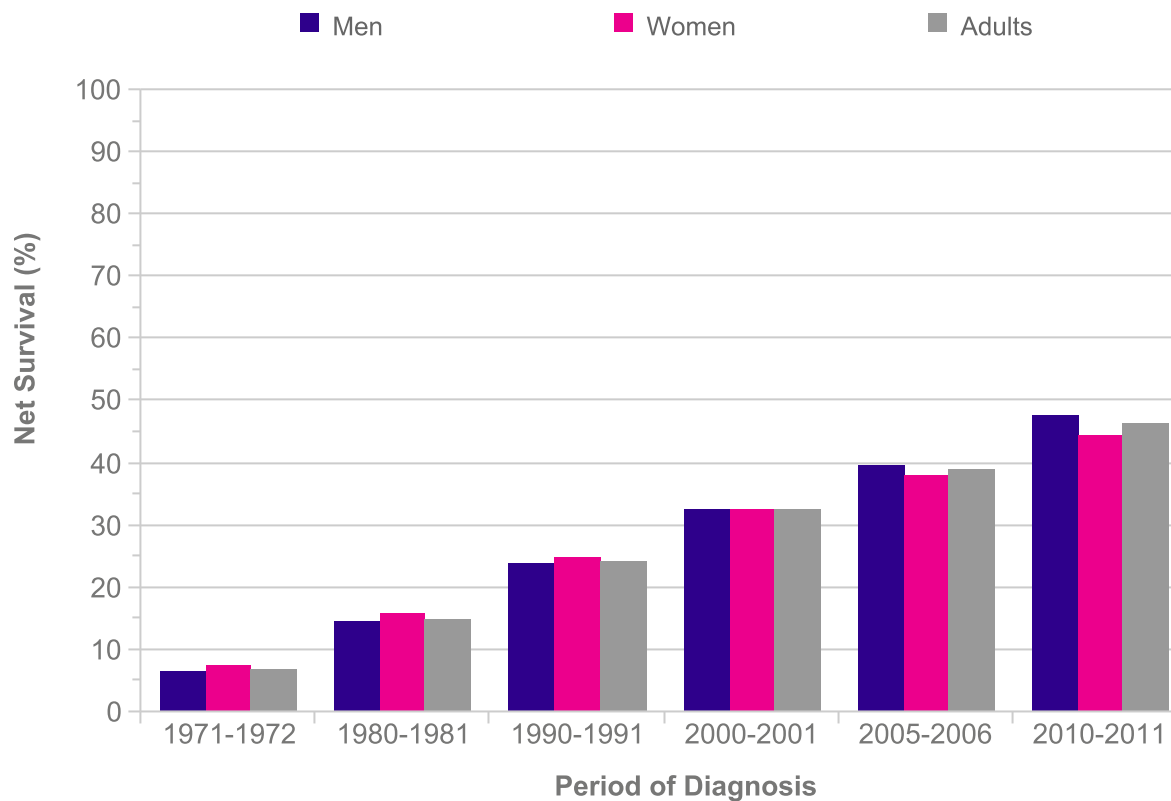


Leukaemia (C91-C95): 1971-2011

Age-Standardised Ten-Year Net Survival, England and Wales

Period of Diagnosis	Net Survival (%)		
	Men	Women	Adults
1971-1972	6.5	7.2	6.8
1980-1981	14.3	15.6	14.9
1990-1991	23.6	24.7	24.1
2000-2001	32.3	32.4	32.4
2005-2006	39.4	38.0	38.8
2010-2011	47.5	44.4	46.2



Please include the citation provided in our Frequently Asked Questions when reproducing this chart: <http://info.cancerresearchuk.org/cancerstats/faqs/#How>

Prepared by Cancer Research UK

Original data sources:

Survival estimates were provided on request by the Cancer Research UK Cancer Survival Group at the London School of Hygiene and Tropical Medicine.

<http://www.lshtm.ac.uk/eph/ncde/cancersurvival/>

