



Now updating: Cancer incidence and survival up to 2009 and mortality up to 2010

New Factsheet

World Cancer Factsheet

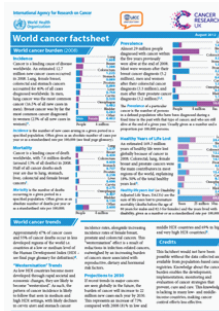
Our latest factsheet looking at cancer worldwide provides an insightful analysis of the global cancer burden. This concise, information-packed factsheet is released jointly with the International Agency for Research on Cancer (IARC).

Cancer is a leading cause of disease worldwide with an estimated **12.7 million new cancer cases** occurring in 2008. If recent trends in major cancers are seen globally in the future, and with increasing populations, the burden of cancer will increase to 22.2 million new cases each year by 2030.

Cancer is also a leading cause of death worldwide, with **7.6 million deaths** (around 13% of all deaths) in 2008. Tobacco is by far the single most important risk factor for cancer and caused 22% of all cancer deaths (1.7 million in 2008) and 71% of lung cancer deaths (almost 1 million in 2008).

Further information on cancer incidence, mortality and major risk factors is presented in this factsheet along with estimates of global cancer prevalence, the number of healthy years of life lost and comparisons of these data by levels of human development across the world.

- Download a free copy of the factsheet from our publications website: <http://publications.cancerresearchuk.org/cancerstats/statsworldwide/worldfactsheet.html>
- The Cancer Worldwide section of CancerStats also has a range of information and downloadable resources, including a world map of cancer incidence: <http://info.cancerresearchuk.org/cancerstats/world/>



Coming soon

Next CancerStats update:

- CancerStats Report - UK Mortality (2010)

CancerStats

Online, on paper and on email

- Our [CancerStats website](http://info.cancerresearchuk.org/cancerstats/) is the leading source of UK cancer statistics
- Around 650 charts, tables, powerpoint slides are free to download. We have information on [incidence](#), [mortality](#), [prevalence](#) and [survival](#) in the UK, Europe and the World, covering 27 cancer sites, cancer of unknown primary (CUP) and all cancers together
- Download our [CancerStats Reports](#), Briefings and Factsheets giving more in-depth detailed explanations about cancer stats and risk factors
- Find useful links to other data sources
- **Find us online** at <http://info.cancerresearchuk.org/cancerstats/> or search for "CancerStats"
- **Contact** the Stats Team at stats.team@cancer.org.uk

CancerStats in the news

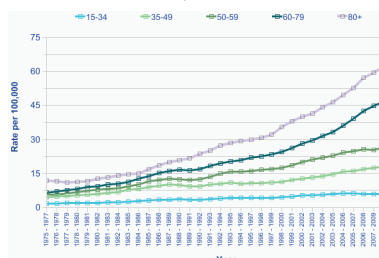
Press release

Middle-aged hit by surge of potentially fatal skin cancer

Malignant melanoma incidence rates in people in their 50s in Great Britain have **more than tripled** over the last 30 years. Rates have risen from 7.5 cases of melanoma per 100,000 people in their 50s to 26.6 cases per 100,000. Cases of melanoma in this age group have increased from fewer than 500 each year to almost 2,000 over the same period.

The sharp increase means that more than five people a day in this age group are now diagnosed with melanoma - which can prove fatal if diagnosed at a late stage.

And the latest available UK figures show that the total number of cases of melanoma for all ages increased from around 12,100 in 2009 to around 12,800 in 2010 - a rise of more than five per cent.



The earlier cancer is diagnosed, the better chance people have to beat the disease.

The stark rise in melanoma rates highlights the importance of raising awareness of the signs and symptoms of skin cancer, encouraging people to visit their doctor promptly if they notice any unusual changes in their skin and staying safe in the sun.

- Our CancerStats website presents the latest incidence, mortality, survival and information on risk factors for skin cancer: <http://info.cancerresearchuk.org/cancerstats/types/skin/>

Key Facts

CancerStats Key Facts – an expanding series of simple messages about the statistics on common cancers – are also free to download. They provide key statements on incidence, survival, mortality and the main causes of cancer.

<http://info.cancerresearchuk.org/cancerstats/keyfacts>

Together we will beat cancer

Email: stats.team@cancer.org.uk

Web: <http://info.cancerresearchuk.org/cancerstats/>



Latest CancerStats Report: UK Incidence

Our latest CancerStats Report shows that **around 320,000 people were diagnosed with cancer in the UK in 2009**. Just four cancers - breast, lung, colorectal and prostate - account for over half of the cancer burden in the UK each year.

This report provides a detailed summary of cancer incidence in the UK and includes information on incidence by country of the UK, by cancer site, by age and over time (including explanations of the likely drivers of trends in particular cancers).



- Download the report, slides of the charts and tables and the Incidence Key Facts from our publications website: <http://publications.cancerresearchuk.org/cancerstats/statsincidence>
- Our CancerStats website also contains all the data from the report with charts and tables available to download: <http://info.cancerresearchuk.org/cancerstats/incidence/>

New Data Briefing: CUP UK data briefing

Our latest data briefing, produced in collaboration with NCIN, looks at data on individuals whose tumour was recorded as a cancer of unknown primary (CUP). This happens if the primary site of the malignancy cannot be established or the tumour has been registered without specification of site. **Most of these patients have relatively poor outcomes**. The uncertainty of the primary site of the tumour at time of treatment often severely impedes the management and treatment of patients.

The latest UK data showed that CUP accounts for **more than 3% (10,470 cases) of all cancer cases** and **7% (10,472 deaths) of all deaths from cancer**.

- Download a free copy of the data briefing and our Key Facts on CUP from our publications website: http://publications.cancerresearchuk.org/cancerstats/stats_unknown_primary
- Our CancerStats website also contains all the data from the briefing with charts and tables available to download: <http://info.cancerresearchuk.org/cancerstats/types/cancer-of-unknown-primary/>

Spotlight on: CancerStats risk factors sections

Did you know that in the UK in 2010, 23% of liver cancer cases were caused by smoking, and 21% of bowel cancer cases were linked to consumption of red and processed meat?

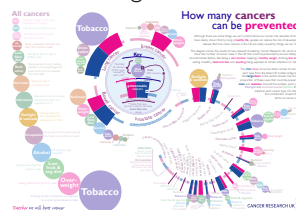
Our CancerStats website provides comprehensive information on the risk factors that have been shown to either increase or decrease the risk of developing cancer; and those where the evidence shows there is no link.

We summarise the evidence on risk factors for specific cancer sites and provide estimates of the proportion of cases attributable to certain risk factors in our section Types of cancer.

- CancerStats: Types of cancer: <http://info.cancerresearchuk.org/cancerstats/types/>

In addition we present information by risk factor type in our section Causes of cancer. The section summarises evidence for the effects on cancer risk of factors including tobacco, overweight, low fruit and vegetable intake, and alcohol.

The section also contains the results of a major study, funded by Cancer Research UK, that found that **43% of all UK cancer cases in 2010 were attributable to largely preventable causes**. We have also presented the findings in the infographic shown here, which can be downloaded from our website.



- CancerStats: Causes of cancer: <http://info.cancerresearchuk.org/cancerstats/causes/>

CancerStats News

Anyone can join this newsletter and receive updates on cancer statistics.

- To subscribe to this periodic newsletter, email stats.team@cancer.org.uk with "Newsletter Subscribe" in the subject line
- To unsubscribe, email stats.team@cancer.org.uk with "Newsletter Unsubscribe" in the subject line

The blog

Cancer Research UK's blog covers the latest cancer statistics and research. We highlight other relevant material, debunking myths and media scares, and provide links to other resources.

Did you know?



Support our work.

Find out how by visiting

supportus.cancerresearchuk.org

Credits

Cancer Research UK would like to acknowledge the essential work of the **cancer registries** in the United Kingdom Association of Cancer Registries. <http://www.ukacr.org/>

Without these cancer registries, there would be no incidence or survival data.

More news

- **CancerInsight** for GPs and nurses: <http://bit.ly/JN9ZJA>
- **e-Newsletter** for general CR-UK news: <http://bit.ly/J2124X>

Together we will beat cancer

Email: stats.team@cancer.org.uk

Web: <http://info.cancerresearchuk.org/cancerstats/>