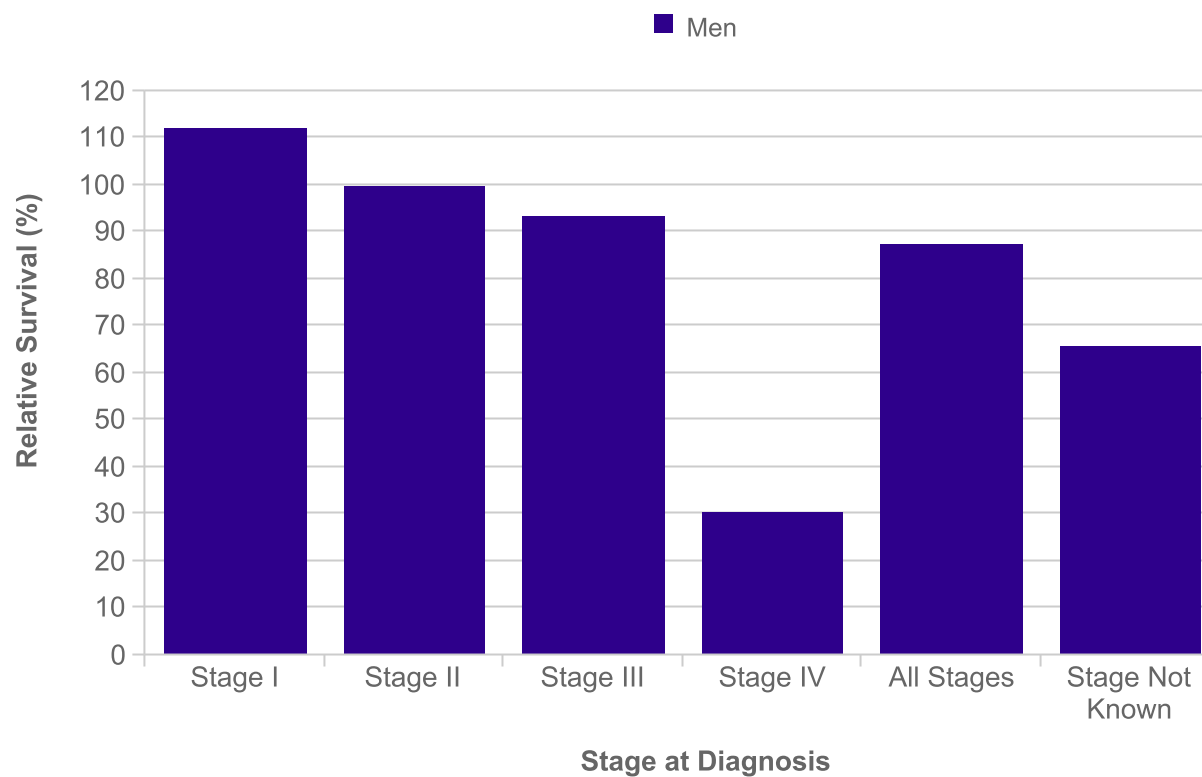


## Prostate Cancer (C61): 2002-2006

### Five-Year Relative Survival (%) by Stage, Adults Aged 15-99, Former Anglia Cancer Network

Stage	Men
Stage I	112.0
Stage II	99.4
Stage III	93.3
Stage IV	30.4
All Stages	87.4
Stage Not Known	65.6



Please include the citation provided in our Frequently Asked Questions when reproducing this chart: <http://info.cancerresearchuk.org/cancerstats/faqs/#How>  
Note: Relative survival can be greater than 100% because it accounts for background mortality. A relative survival figure greater than 100 indicates that people diagnosed have a better chance of surviving one (five) year(s) after diagnosis than the general population.

Prepared by Cancer Research UK

Original data source:

The National Cancer Registration Service, Eastern Office. Personal communication.

<http://ecric.org.uk/>

