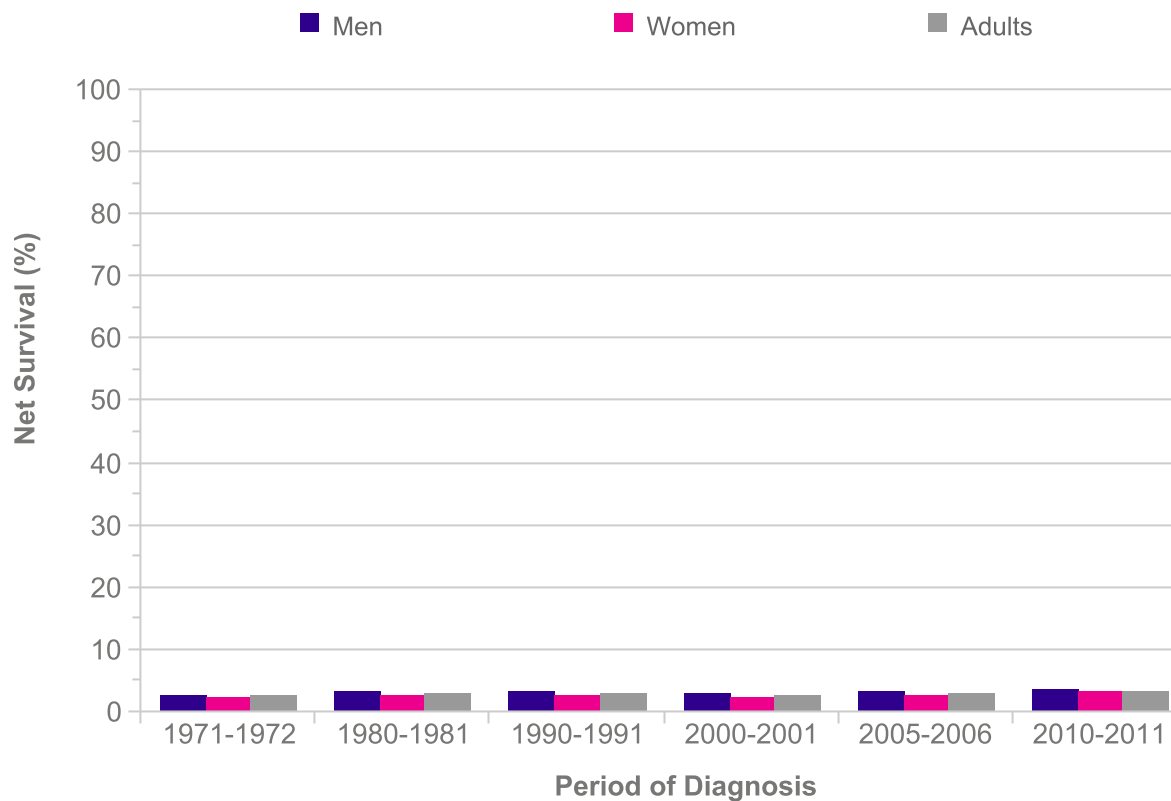


Pancreatic Cancer (C25): 1971-2011
Age-Standardised Five-Year Net Survival, England and Wales

Period of Diagnosis	Net Survival (%)		
	Men	Women	Adults
1971-1972	2.5	2.3	2.4
1980-1981	3.3	2.5	2.9
1990-1991	3.3	2.5	2.9
2000-2001	3.0	2.4	2.7
2005-2006	3.2	2.7	3.0
2010-2011	3.5	3.1	3.3



Please include the citation provided in our Frequently Asked Questions when reproducing this chart: <http://info.cancerresearchuk.org/cancerstats/faqs/#How>
Prepared by Cancer Research UK
Original data sources:
 Survival estimates were provided on request by the Cancer Research UK Cancer Survival Group at the London School of Hygiene and Tropical Medicine.
<http://www.lshtm.ac.uk/eph/ncde/cancersurvival/>

