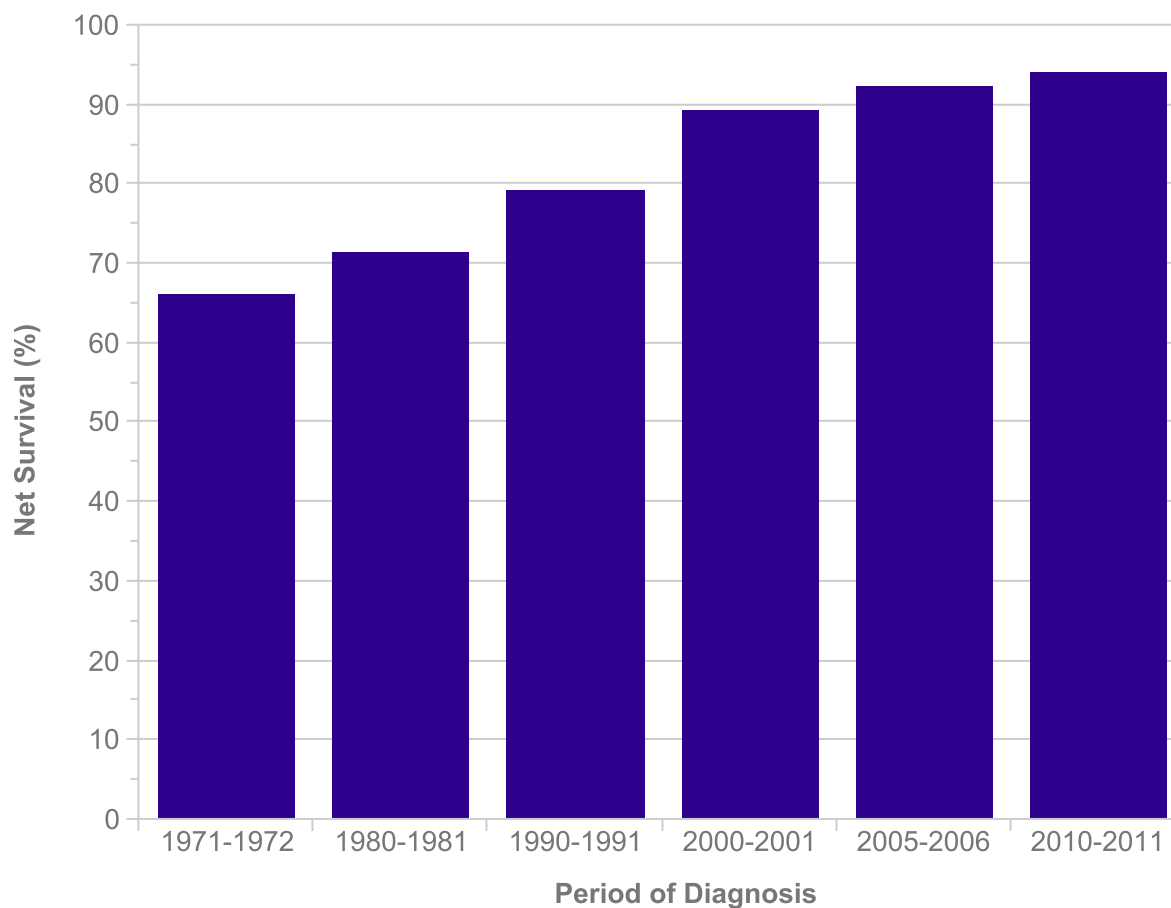


**Prostate Cancer (C61): 1971-2011**  
**Age-Standardised One-Year Net Survival, England and Wales**

	Net survival (%)
Period of Diagnosis	Men
1971-1972	65.9
1980-1981	71.2
1990-1991	79.2
2000-2001	89.1
2005-2006	92.3
2010-2011	94.0



Please include the citation provided in our Frequently Asked Questions when reproducing this chart: <http://info.cancerresearchuk.org/cancerstats/faqs/#How>  
Prepared by Cancer Research UK

**Original data sources:**

Survival estimates were provided on request by the Cancer Research UK Cancer Survival Group at the London School of Hygiene and Tropical Medicine.  
<http://www.lshtm.ac.uk/eph/ncde/cancersurvival/>

