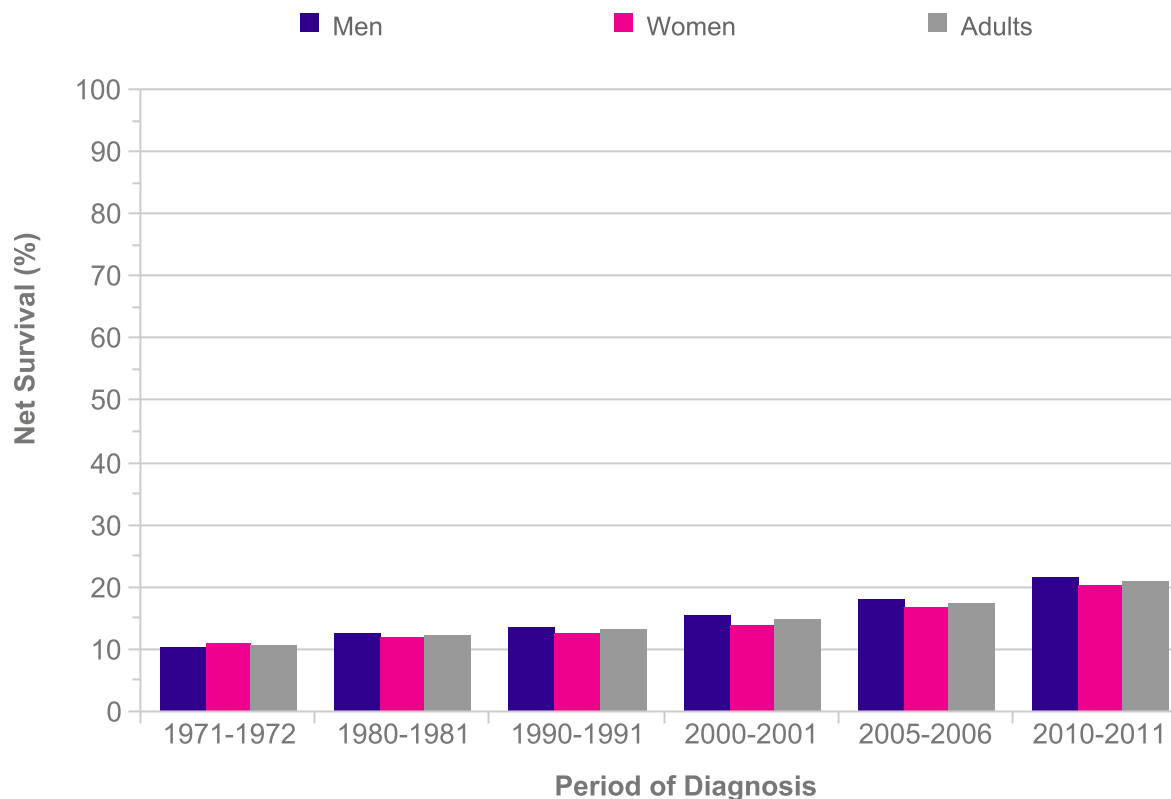


Pancreatic Cancer (C25): 1971-2011
Age-Standardised One-Year Net Survival, England and Wales

Period of Diagnosis	Net survival (%)		
	Men	Women	Adults
1971-1972	10.3	11.1	10.7
1980-1981	12.4	12.0	12.2
1990-1991	13.6	12.5	13.0
2000-2001	15.3	14.0	14.6
2005-2006	18.0	16.7	17.3
2010-2011	21.6	20.1	20.8



Please include the citation provided in our Frequently Asked Questions when reproducing this chart: <http://info.cancerresearchuk.org/cancerstats/faqs/#How>
Prepared by Cancer Research UK
Original data sources:
 Survival estimates were provided on request by the Cancer Research UK Cancer Survival Group at the London School of Hygiene and Tropical Medicine.
<http://www.lshtm.ac.uk/eph/ncde/cancersurvival/>

