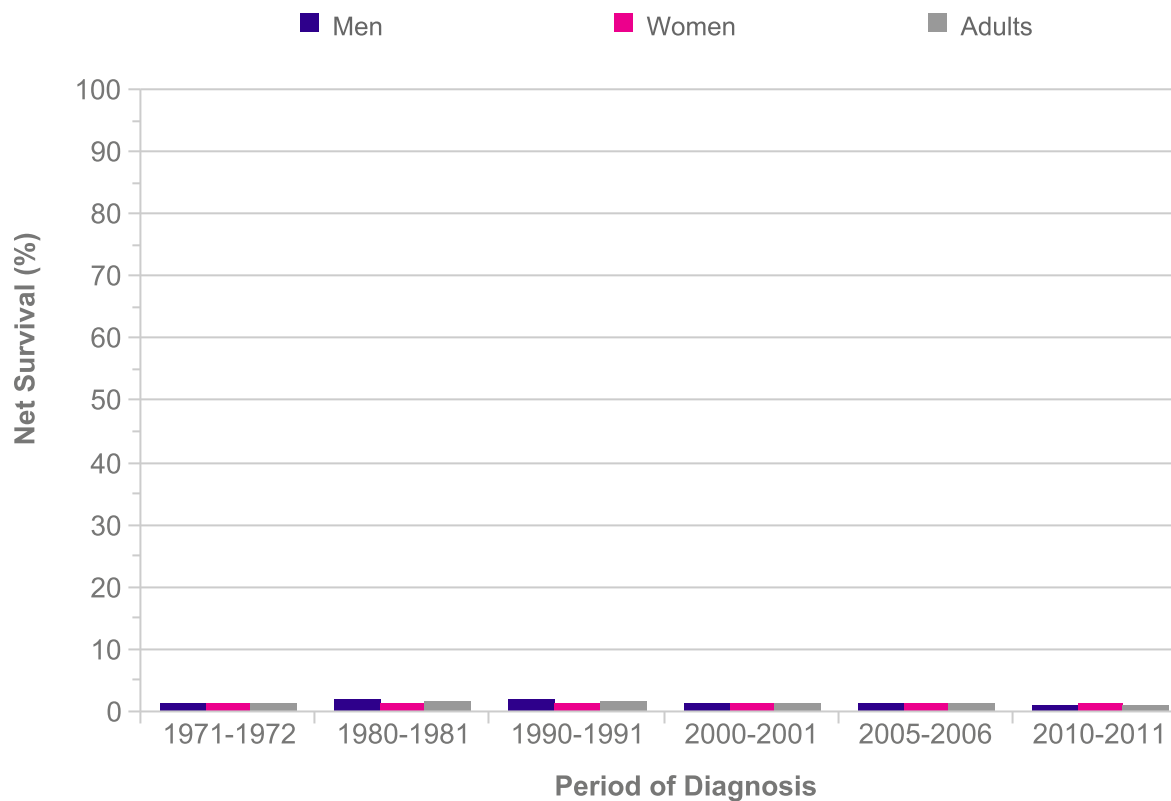


Pancreatic Cancer (C25): 1971-2011
Age-Standardised Ten-Year Net Survival, England and Wales

Period of Diagnosis	Net Survival (%)		
	Men	Women	Adults
1971-1972	1.4	1.2	1.3
1980-1981	1.8	1.3	1.6
1990-1991	1.8	1.3	1.6
2000-2001	1.4	1.1	1.3
2005-2006	1.2	1.2	1.2
2010-2011	1.1	1.1	1.1



Please include the citation provided in our Frequently Asked Questions when reproducing this chart: <http://info.cancerresearchuk.org/cancerstats/faqs/#How>
Prepared by Cancer Research UK
Original data sources:
 Survival estimates were provided on request by the Cancer Research UK Cancer Survival Group at the London School of Hygiene and Tropical Medicine.
<http://www.lshtm.ac.uk/eph/ncde/cancersurvival/>

